

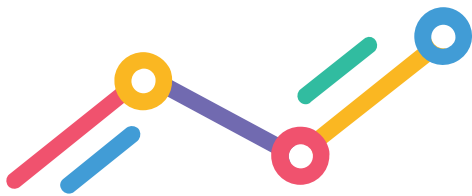
Introducing

THE FUTURE OF CONDITION MONITORING



TrackSense

Powered by MRD Rail Technologies



tracksense

TrackSense represents the next generation of remote condition monitoring, combining modular expansion units with industry-standard sensors and a powerful cloud server for seamless data storage and analysis. Designed for affordability and reliability, TrackSense offers a practical solution for asset maintenance management you can depend on.

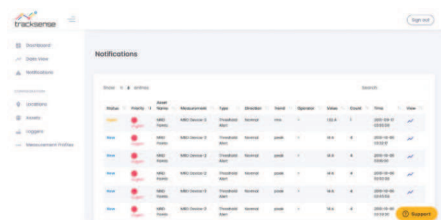
TrackSense Modular Hardware

TrackSense is designed with your organization in mind. Unlike expensive, rigid systems, it offers an affordable, modular solution compatible with off-the-shelf sensors, letting you choose the tools that best meet your needs. The DIN-mounted backbone design allows easy, cost-effective expansion, upgrades, and module replacement, often without system downtime. TrackSense provides lasting value and support long after purchase. It can monitor key performance data for any rail asset, including:

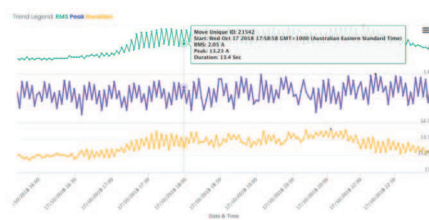


TrackSense Cloud Platform

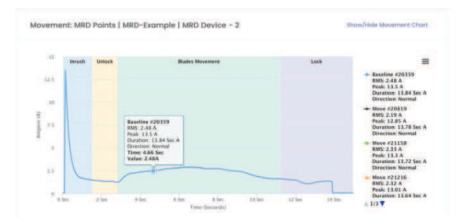
TrackSense enables real-time monitoring and predictive analysis of your network's assets from anywhere, offering flexible options for cloud or local processing and protection of your data with encryption and user credentials. You can streamline your workflow by integrating alerts into your existing maintenance platform, and daily email reports provide a comprehensive overview of your entire system, ensuring you always stay informed and in control.



TrackSense Cloud gives you oversight of your system's health/performance from anywhere



Asset trend view for predictive alerts and monitoring gradual performance degradation



View and compare individual movement's signatures for analytics, alerts and fault finding

The TrackSense Cloud Server is now available on Android platform for all customers





The Future Of Condition Monitoring

Logger Module

The TrackSense Logger Module is the core of the TrackSense system. It collects data from all of the connected expansion modules, stores it on an on-board buffer to protect your data from power/network outages and securely uploads it all to the TrackSense Cloud server when possible.

General Data

Dimensions (W x H x D)	22.5 × 107 × 95mm
Weight	0.25kg
Operating Temperature	-25 to 70°C
IP rating	IP40
Supply Voltage	24V DC
Supply Current	80mA
Storage	16GB SD Card
Ethernet	RJ-45, 10 Mbit/s or 100 Mbit/s
RS-485	MODBUS RTU



TS-LOG

Analog Module

The TrackSense Analog Module expands the TrackSense system, allowing for up to 6 additional 4-20mA analog sensor inputs per module.

General Data

Dimensions (W x H x D)	22.5 × 107 × 95mm
Weight	0.25kg
Operating Temperature	-25 to 70°C
IP rating	IP40
Supply Voltage	24V DC
Supply Current	40mA + 50mA per Channel



TS-ANA

Digital Module

The TrackSense Digital Module expands the TrackSense system, allowing for up to 12 additional digital sensor inputs per module.

General Data

Dimensions (W x H x D)	22.5 × 107 × 95mm
Weight	0.25kg
Operating Temperature	-25 to 70°C
IP rating	IP40
Supply Voltage	24V DC
Supply Current	100mA



TS-DIG



TrackSense

Earth Insulation Monitor

MRD Rail Technologies Pty Ltd

+61 7 3821 5151

sales@mrd.com.au

www.mrd.com.au

The Future Of Condition Monitoring

Earth Leakage Detector Module

The TrackSense Earth Insulation Monitor Module expands the TrackSense system, allowing it to monitor the insulation between your floating IT system and earth.

General Data

Dimensions (W x H x D)	22.5 x 107 x 95mm
Weight	0.25kg
Operating Temperature	-25 to 70°C
IP rating	IP40
Earth Leakage Detection	0-999KΩ
Busbar Isolation	2kV
Busbar Rated Voltage	650V AC/DC



TS-ELD

Modem Module

The TrackSense Modem provides your Condition Monitoring installation with a secure connection to the TrackSense Cloud Server, allowing for easy data collection, analysis and reporting from remote locations which don't have pre-existing internet infrastructure.

General Data

Dimensions (W x H x D)	22.5 x 107 x 95mm
Weight	0.25kg
Operating Temperature	-25 to 70°C
IP rating	IP40
Supply Voltage	24V DC
Supply Current	275mA
4G Bands	FDD: B1 (2100), B3 (1800), B5 (850), B7 (2600), B8 (900), B20 (800) TDD: B38 (2600), B40 (2300), B41 (2500)
Category	LTE Cat.4



TS-MOD